

**Cook's Ferry  
Indian Band**  
Naka'pamux Nation

---

## INFORMATION RELEASE

---

### **FOR IMMEDIATE RELEASE**

August 9, 2024  
Spences Bridge, BC

# **EVACUATION ALERTS DOWNGRADED TO ALL CLEAR**

**Effective 8:00 AM Friday August 9, 2024,**

---

The Cook's Ferry Indian Band Chief and Council are downgrading Evacuation Alerts to All Clear for Indian Reserves # 1, 4, 4A, 4B, 4C, 8, 9, 10, 11, 11A, 16 Twoyqhalsh't, 16 Schikaelt'on, 17, 18, 19 Firstly, 19 Secondly and 20, due to the decreased fire activity on the Eastern flank of **Wildfire – K70910 Shetland Creek.**

For clarity the following is the current list of Evacuation Orders and All Clear status for Cook's Ferry Indian Reserves as of August 9 2024 at 8:00 AM:

#### **EVACUATION ORDERS:**

Indian Reserves # 3, 5, 5A, 6, 8A, and 22.

#### **ALL CLEAR:**

Indian Reserves # 1, 4, 4A, 4B, 4C, 8, 9, 10, 11, 11A, 16 Twoyqhalsh't, 16 Schikaelt'on, 17, 18, 19 Firstly, 19 Secondly and 20.

**Inquiries concerning this Release:**

**Director of Protective Services (Fire Chief)**

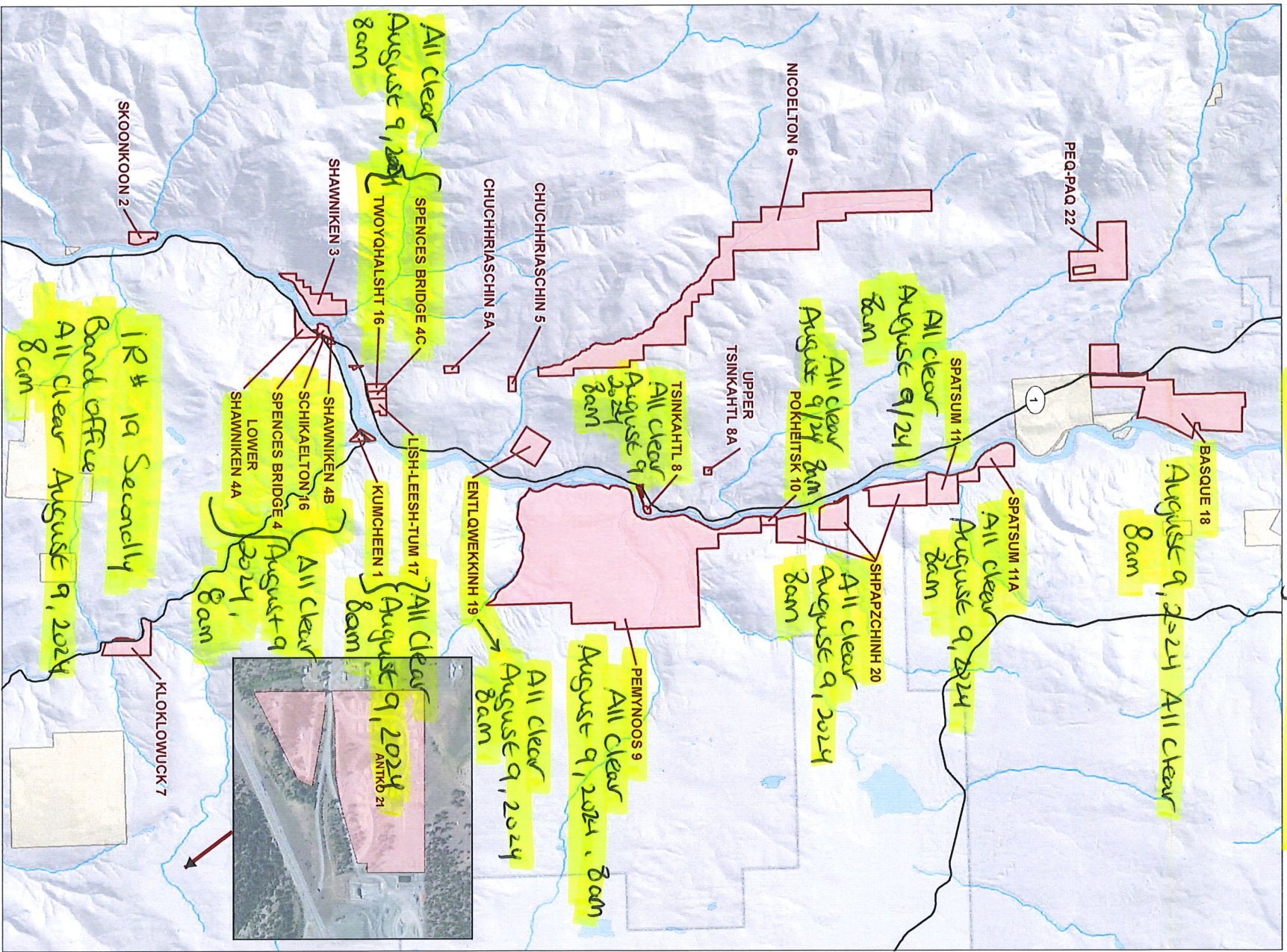
Steven Sherwood

Email: [protective.services@cooksferry.ca](mailto:protective.services@cooksferry.ca)

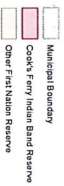
Telephone: 778-253-0123

All clear

Cook's Ferry Indian Band



Cook's Ferry Indian Band  
Reserves Overview



The accuracy & completeness of information shown on this drawing is not guaranteed. It is the responsibility of the user to verify the accuracy of the information and to establish the precise location of all existing infrastructure within the limits of risk.



Coordinate System: NAD 1983 UTM Zone 10N  
Scale: 1:50,000  
Data Source: Derived by Esri using a combination of aerial photography, satellite imagery, and road data provided by various government agencies.

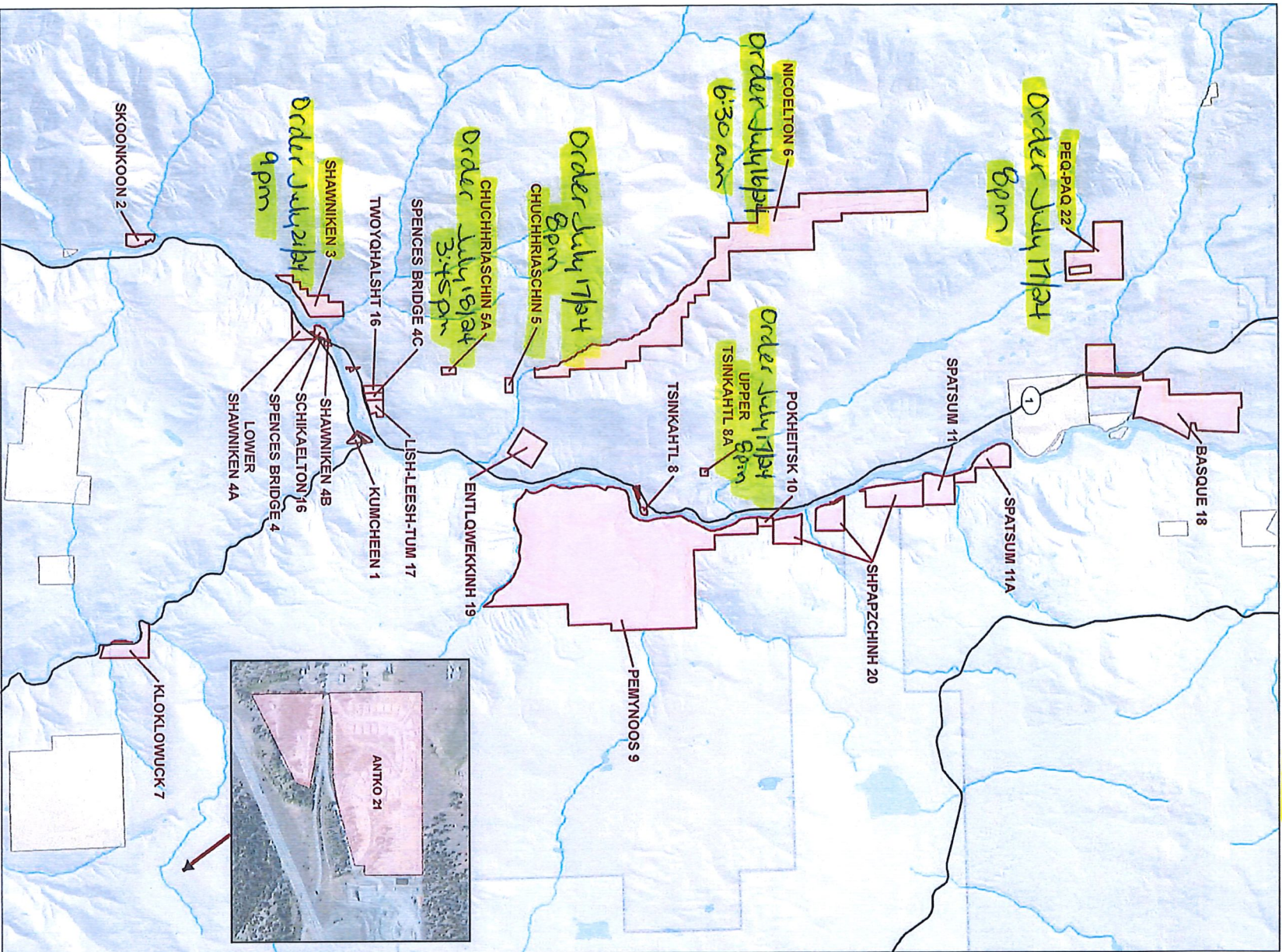
Project #	GMA-6011631
Author	AM
Checker	-BMMF-
Status	A
Revision	2017/11/2
Date	

**TURBANT**  
SYSTEMS/DESIGN  
FIGURE 1

updated August 8 2024 12:36 pm

Evaluation Orders

Cook's Ferry Band.



Updated August 4 19at 2pm

**Cook's Ferry Indian Band**

Reserves Overview

- Municipal Boundary
- Cook's Ferry Indian Band Reserves
- Other First Nation Reserves

**Location within BC**

The accuracy of this map is not guaranteed by the Province of British Columbia. The Province of British Columbia is not responsible for any errors or omissions in this document. The Province of British Columbia is not responsible for any errors or omissions in this document.

Scale: 1:25,000

Map Date: 11/22/2011

Map Title: Cook's Ferry Indian Band Reserves Overview

Map Author: AK

Map Date: 2017/11/2

**URBAN SYSTEMS**

FIGURE 1